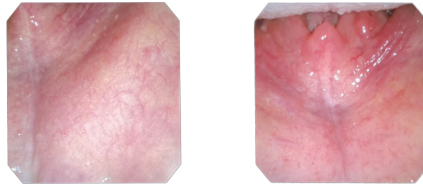




ES-5000 NEW VIDEO ENDOSCOPY LINE VIDEO GASTROSCOPE & COLONOSCOPE

High Definition

Megapixel high-definition sensor, 1080P full HD video signal output, perfect image.



Auxiliary water function

The auxiliary water jet can ensure a clean and clear endoscopy environment at any time, and can quickly find the bleeding point.



Auxiliary water function



Lightweight and smooth handle



Small Bending Radius/Large Angle

Storage/Patient Information Entry Function

Supports the imaging capturing and video recording function.

Memory data can be stored on USB flash drive.

Supports USB keyboard can Patient information entry function



USB data transfer



USB keyboard can custom case



Image/Video Storage

Ultra High Compatibility

This series scopes camera multilingual system suite for wide variety of endoscopes that can be used for different applications in different organ systems including the **gastroscope**, the **colonoscope**, the **bronchoscope**, the **nasopharyngoscope**, the **cystoscope**....

Endoscope System+ Endoscope pump



ES-CLS80 LIGHT SOURCE

Lamp : LED light (80W white)
Power : 220-240V; 50-60HZ
Illuminance : ≈200,000 lx
Color temperature : ≈5300K
Air pump pressure : 30-60Mpk.
Air flow : 4-10 L/min



ES-EIS5000 IMAGE PROCESSOR

Video signal output: HDMI , VAG
Sharpness adjustment : 0-10 grade
Brightness adjustment : 0-100 grade
Color setting : Red , Blue (0-128 grade)
White balance : Auto white balance/Manually white balance
Gain function : 1-16 grade
Image enhancement : 1-4 grade



Endoscopic Pump

Removable pumphead for quick and easy assembly

The water flow can be adjusted independently

Closed water flushing system

Technical Specification

	Gastroscope ES-EVG200	Colonoscope ES-EVC300
Diameter of Distal-end	9.8mm	φ13.0mm
Diameter of Insertion tube	9.6mm	φ12.8mm
Biopsy channel	φ2.8mm	φ3.7mm
Working length	1030mm	1330mm
Total length	1330mm	1630mm
View of field	140°	140°
Depth of View	3-100mm	3-100mm
Resolution	1,000,000 CMOS	1,000,000 CMOS
Tip Deflection	U:210° D:90° L/R:100°	U:180° D:180° L/R:160°

ES-VPG200 Video Pediatric Gastroscope



Diameter of Distal-end	Diameter of Insert Tube	View of field	Biopsy channel	Working Length	Depth of View	Resolution	Tip Deflection
Ø6.5mm	Ø6.5mm	140°	Ø2.0mm	1030mm	3-100mm	1000K pixels (cmos)	UP180°;Down 90°;L/R 100°

ES-VPC300 Video Pediatric Colonoscope



Diameter of Distal-end	Diameter of Insert Tube	View of field	Biopsy channel	Working Length	Depth of View	Resolution	Tip Deflection
Ø11.0mm	Ø10.8mm	140°	Ø3.2mm	1350mm	3-100mm	1000K pixels (cmos)	UP180°;Down 180°;L/R 160°



ESSE3 srl, Via Garibaldi 30
 14022 Castelnuovo D.B. (AT)
 Tel +39 011 99 27 706
 Fax +39 011 99 27 506
 e-mail: danielec@esse3-medical.com
 web: www.esse3.dreamgest.com

